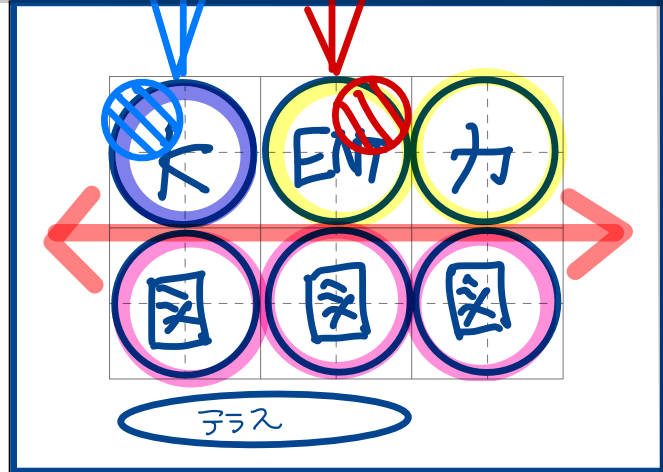


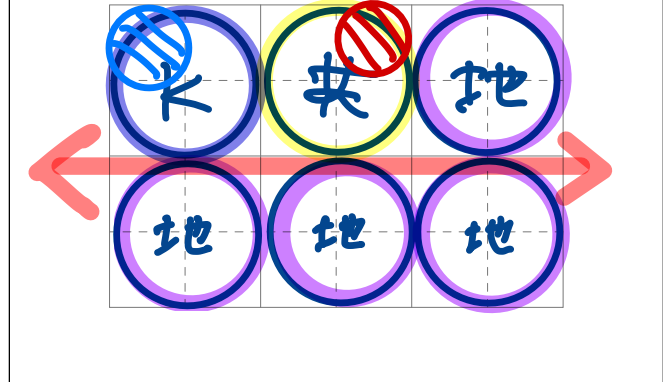
STEP-0

KP BP
SP

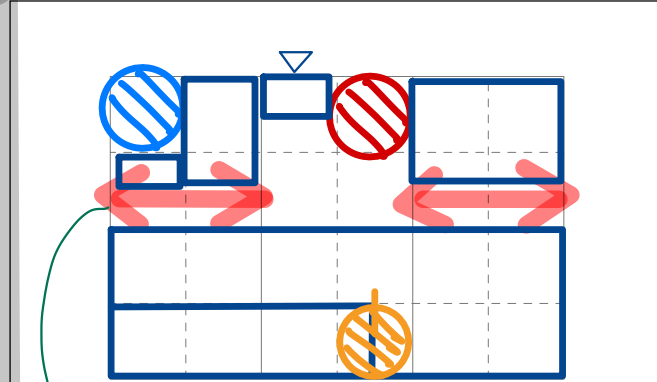
36m



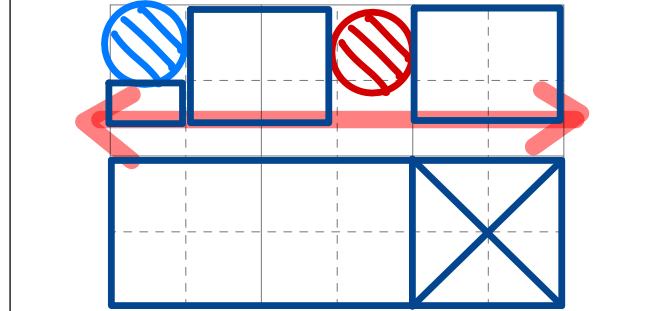
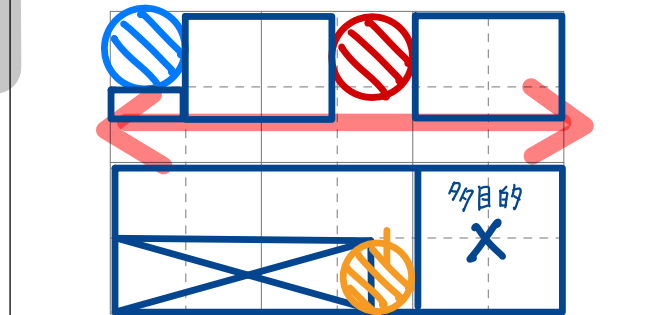
52m



STEP-1

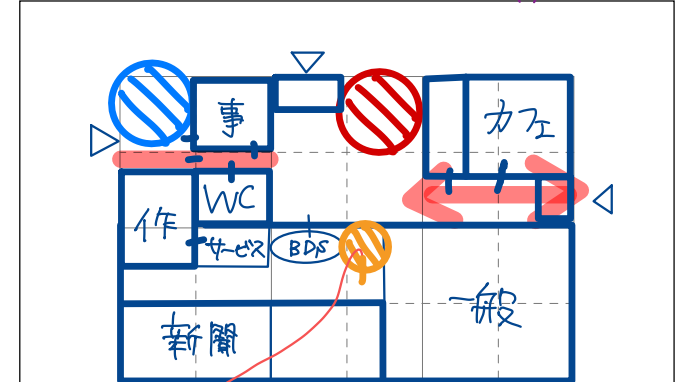


南側にポリユーをのこしたい

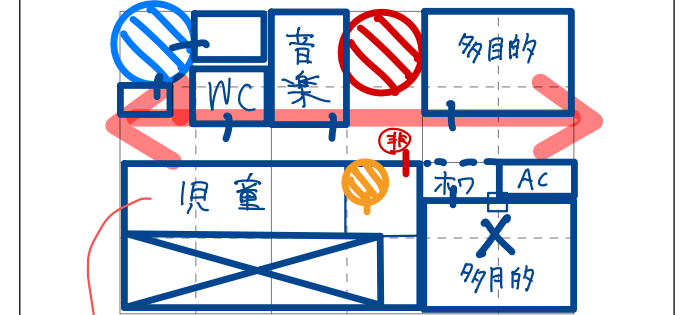


STEP-2

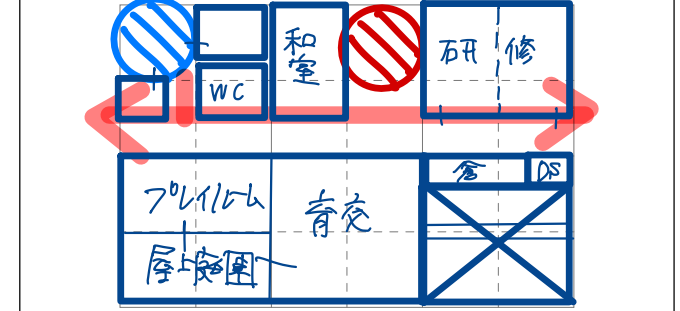
教科書を言明仕様が
もう一度やる。



① EVのみ



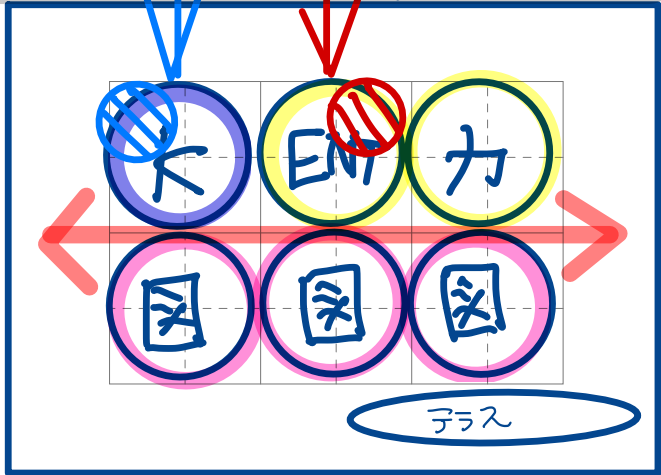
② 細長いのが表になる...
→ 吹抜けの取り方調整



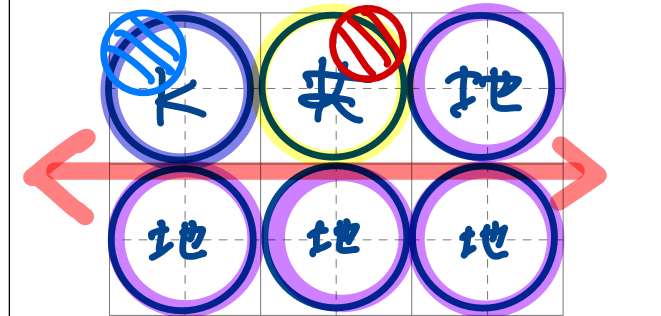
①② から、ゾーニングからやり直し。

STEP-3

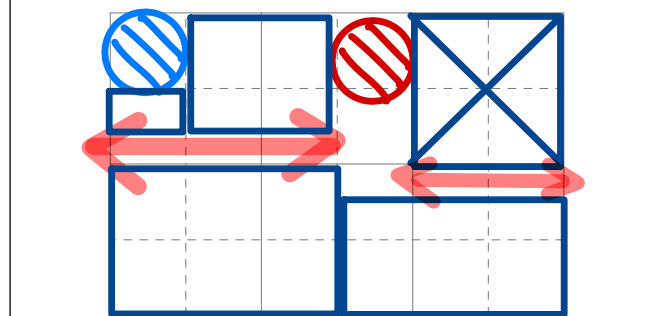
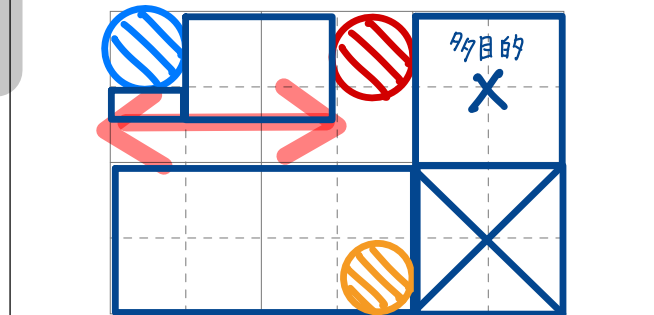
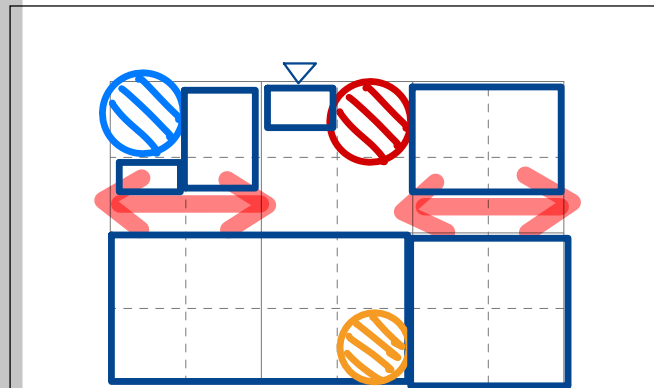
KP BP
SP



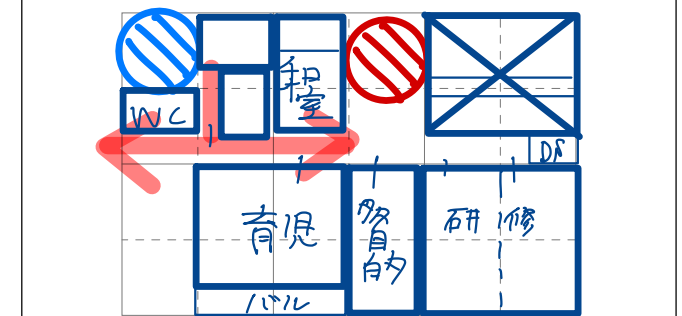
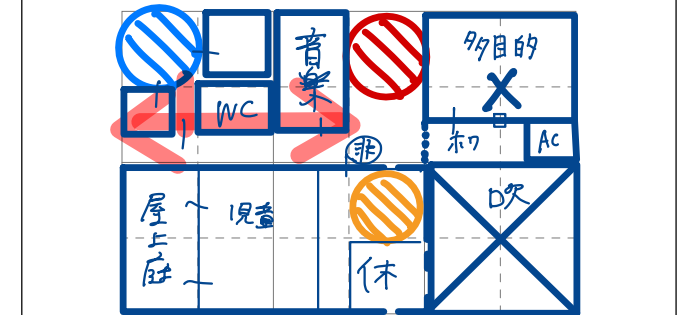
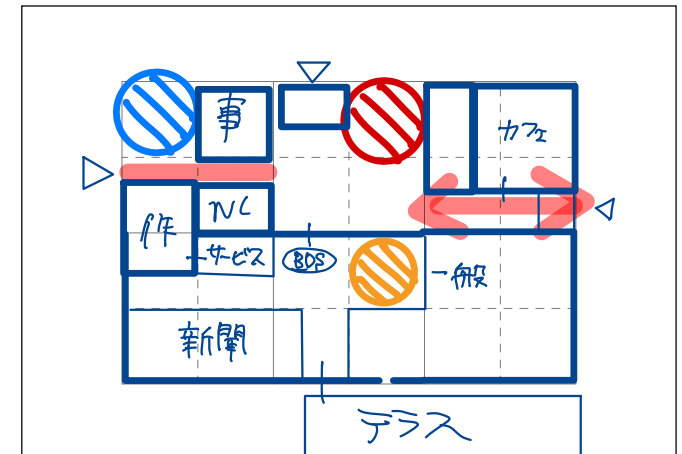
52m



STEP-4

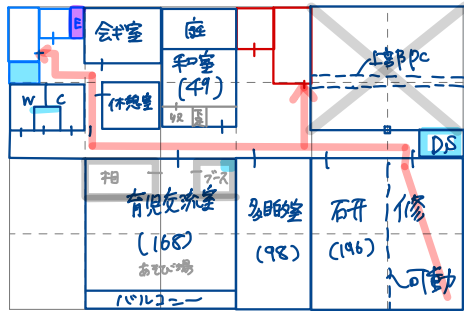
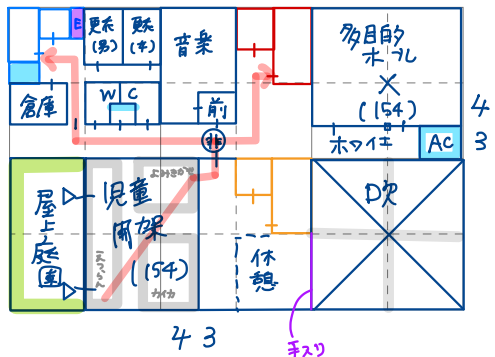
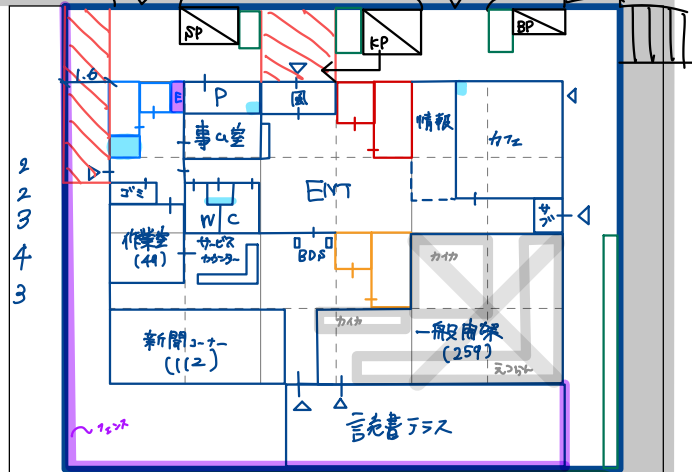


STEP-5



2 7 7 7 7 7 7 3
STEP-3

5
7
7
7
7
7
3



STEP-4

・27日の会をへて、**読書ラウンジ**をもう一度
見ながらやりました。

・次は、**Ⓚ**コアの位置や、**3A**の位置を
変えたかどうかでチャレンジしてみます。

STEP-5

2021.05.01 サイトウ